



GIRL GUIDES
AUSTRALIA
NSW & ACT

ANNUAL
REPORT
2016

Fun, Friends & Adventure

www.girlguides-nswact.org.au



ASIA PACIFIC REGION WORLD ASSOCIATION OF GIRL GUIDES AND GIRL SCOUTS

With ten million Girl Guides and Girl Scouts from 146 countries across the world, the World Association of Girl Guides and Girl Scouts (WAGGGS) is the largest voluntary movement dedicated to girls and young women in the world.

ASIA PACIFIC REGION

Australia · Bangladesh · Brunei Darussalam · Cambodia · Cook Islands · Fiji · Hong Kong · India · Japan · Kiribati · Korea · Malaysia · Maldives · Mongolia · Myanmar · Nepal · New Zealand · Pakistan · Papua New Guinea · Philippines · Singapore · Solomon Islands · Sri Lanka · Taiwan · Thailand · Tonga

ARAB REGION

Bahrain · Egypt · Jordan · Kuwait · Lebanon · Libya · Mauritania · Oman · Qatar · Sudan · Syria · Tunisia · United Arab Emirates · Yemen

AFRICA REGION

Benin · Botswana · Burkina Faso · Burundi · Cameroon · Central Africa Republic · Chad · Congo · Congo, The Democratic Republic · Gambia · Ghana · Guinea · Ivory Coast · Kenya · Lesotho · Liberia · Madagascar · Malawi · Mauritius · Namibia · Nigeria · Rwanda · Senegal · Sierra Leone · South Africa · South Sudan · Swaziland · Tanzania · Togo · Uganda · Zambia · Zimbabwe

WESTERN HEMISPHERE REGION

Antigua and Barbuda · Argentina · Aruba · Bahamas · Barbados · Belize · Bolivia · Brazil · Canada · Chile · Colombia · Costa Rica · Curaçao · Dominica · Dominican Republic · Ecuador · El Salvador · Grenada · Guatemala · Guyana · Haiti · Honduras · Jamaica · Mexico · Nicaragua · Panama, Republic of · Paraguay · Peru · Saint Kitts and Nevis · Saint Lucia · Saint Vincent and The Grenadines · Surinam · Trinidad and Tobago · United States of America · Venezuela

EUROPE REGION

Armenia · Austria · Belarus · Belgium · Cyprus · Czech Republic · Denmark · Estonia · Finland · France · Georgia · Germany · Greece · Hungary · Iceland · Ireland · Israel · Italy · Latvia · Liechtenstein · Lithuania · Luxembourg · Malta · Monaco · Netherlands · Norway · Poland · Portugal · Romania · Russian Federation · San Marino · Slovak Republic · Slovenia · Spain · Sweden · Switzerland · Turkey · Ukraine · United Kingdom

Girl Guides NSW & ACT Annual Report 2016

Contents

| | |
|--|----|
| State Commissioner's Report | 2 |
| Chief Executive Officer's Report | 4 |
| State Treasurer's Report | 6 |
| Our Strategic Plan for 2020 | 8 |
| The Australian Guide Program | 9 |
| Girl Guides NSW & ACT: a year in numbers | 10 |
| Our Operating Structure | 14 |
| Awards and Recognition System | 16 |
| Appointments | 18 |
| Girl Guides NSW & ACT State Properties | 21 |
| Financial Statement | 22 |

State Commissioner's Report

Girl Guides has always been a Movement. It was BP himself who advocated that Guiding be best described as a Movement. That we should always look to the future, to grow to best meet the needs of our Members, our current circumstances and our communities. Girl Guides NSW & ACT continues to take heed of this ethos and strives to look to the future of Girl Guiding while considering the current needs of our Association.

The Girl Guides NSW & ACT Board worked very hard in 2016 to coalesce their ways of working, enabling a smoother transition for five incoming Directors and their State Commissioner and Board Chair. Part of this process was to separate out the role of Director to the Board of Girl Guides Australia, a role that had grown in recent years, adding significantly to the workload of the State Commissioner. Rosemary Derwin performed this additional responsibility and I thank her for this and for her significant contribution to the organisation over the last five years as State Treasurer.

Of note is the work undertaken to reinvigorate the Risk and the Governance Sub Committees to the Board. The work of both of these Committees is integral to ensuring good governance outcomes are provided to our Members through our Board.

I would like to take this opportunity to thank Acting State Commissioner Elizabeth Starr and Acting Deputy State Commissioner Renée Bianchi for the magnificent way they both stepped into their respective roles to ensure Girl Guides NSW & ACT continued to meet the needs of their Members while in this transition phase.

I would also like to extend my thanks to Carol Simpson, who as a Deputy State Commissioner, so ably supported not only myself but Guiding in NSW and the ACT. Carol stepped down after a relatively short time in the role, but I thank her for her contribution.

2016 also saw the resignation of CEO Peta Gillies. Girl Guides NSW & ACT thank Peta who worked tirelessly to ensure the best outcomes for our Members and for Girl Guides NSW & ACT as a whole. She put her energy into ensuring we were in a sound position to continue well into the future. I know you will join me in wishing her well for the future.

Helen White was appointed as CEO in December 2016 and I welcome her into the Girl Guides NSW & ACT family and look forward to working with her to continue to consolidate our position and invigorate our Movement.

I must also congratulate the team of Sydney Jamboree 2018 who worked very hard to put together an Event plan to, on behalf of our Board, present to the Girl Guides Australia Board, which saw Girl Guides NSW & ACT approved to host this mighty event. This team, headed by Helen Eggleton, are a force to be reckoned with and I am looking forward to this event, as I am sure you are.

Guiding At The House, or GATH as it became known, saw Parliament House in Sydney awash with Girl Guides. State Managers, Board Directors, our CEO and General Manager—Operations met with many Members of Parliament to develop relationships, inform them of our initiatives, assure them of our relevance, and ensure the voice of our movement is heard at the highest levels of governance and considered in policy making and parliamentary decisions. GATH also afforded youth Members an opportunity to connect with female Members of Parliament—role models, who were so willing to share their journeys, their learnings, and offer advice to the girls.

Girl Guides NSW & ACT saw a decline in numbers throughout 2016. Reversing this situation remains a top priority for all involved in Guiding. We must remember that the demands on family time are continually evolving and that this in turn necessitates that we consider how best Guiding can be delivered to the current generation of girls and young women.

Thank you to each and every one of the many people from our Directors, Managers, Consultants, Liaisons, Leaders, to Parents and Friends all of whom, along with our hardworking staff continue to strive to fulfil our mission to become Australia's leading organisation for girls and young women.

I would like to thank all directors who retired at the 2016 AGM. In particular I would like to thank those retiring directors who served with me on the Board since my appointment: Judith Poole, Anne Knight, Bev Orr and Rosemary Derwin as well as retiring Region Manager, Jenny Cox for their contribution to GG NSW & ACT.

I commend the 2016 Annual Report to you and trust you will find the information included a pertinent snapshot of Girl Guides NSW & ACT.



Sarah Neill | State Commissioner



Chief Executive Officer's Report

It was with pleasure that I joined Girl Guides NSW & ACT at the start of this year as CEO, following the departure of Peta Gillies. She has left her mark on the organisation and I would like to thank her for the positive change she made. Although I was not part of Guiding in 2016, I would like to acknowledge the significant achievements and developments made during that time with the implementation of the 2015–2020 strategic plan.

In 2016, with the advent of the Risk Committee and in collaboration with the Property team and key volunteers and with the full support of the Board, the organisation commenced the process of addressing the potential risks within the Girl Guides NSW & ACT largely ageing property portfolio. This project started with phase I of a property audit portfolio approach to ensure property compliance throughout our Regions is achieved and phase II audits of the balance of the portfolio will be rolled out in 2017.

This project is an estimated \$261,000 investment for the organisation which, in combination with the roll-out of the updated Property Inspection Forms, creates a significantly improved risk compliance approach for Girl Guides NSW & ACT and gives support to the regions and unit leaders in the management of their properties. Also in 2016 the organisation invested in state property renovations including Glengarry Hall, Tingira Boatshed refurbishment and an upgrade to Araluen.

In 2016 the final phase-in of the Working With Children Check Project was completed and 100% of active adult Members were re-signed to the code of conduct. This is a further step to ensure that the safety of our Guides remains paramount. The organisation also recently committed a significant budget to a national Child Protection review which will be undertaken in 2017.

The NSW & ACT Member database was a focus for 2016 and continues to be a focus for the organisation. Developments which occurred in 2016 included improved Member reporting, online registration for all L&D courses, and ensuring the accuracy of the Members listed on the database. In 2017 the database will be upgraded with the aim of improving the Member and Leader experience with both the database and the website itself.

In 2016 the Guide Shop was relocated to the current location in McEvoy St, Alexandria. There have also been a number of new items introduced to the shop and these are also represented in the online store.

There were a number of personnel changes in 2016 with the intention of fulfilling strategic objectives by improving operational efficiency, streamlining processes and developing our organisational capacity. This included the appointment of Steffani-Jade McDonagh in the role of General Manager—Operations to facilitate some of these developments. Steffani was also interim CEO following Peta's departure and I would like to thank Steffani for her efficient management of the business during this time.

I would also like to thank the Guide House team who kept the business of Guiding working throughout some significant strategic and personnel changes over the last 12 months and who are passionate about this organisation and about our vision of *becoming Australia's leading organisation for girls and young women in leadership and personal development*.

I look forward to further implementing our Strategic Plan and growing our organisational capacity and Guiding in 2017.

Helen White .

Helen White | Chief Executive Officer



State Treasurer's Report

Girl Guides NSW & ACT are in a strong financial position. Total Accumulated Funds and Reserves as at 31 December 2016 was \$29,232,868. This provides a solid base to support the delivery of Girl Guiding in NSW and the ACT.

As an organisation we are dependent on our investment revenue to support the day-to-day operations of Guiding. Membership revenue decreased during 2016 as a result of declining membership and comprised only 23% of our total revenue. Investment income represented 48% of our total revenue during 2016.

Funds invested with external fund managers as at 31 December 2016 totalled \$24,407,666. These funds are invested in balanced portfolios with a focus on ethical investments. The Finance Management Committee vigilantly monitor the performance of the fund managers to ensure investments are in line with the investment mandate of Girl Guides NSW & ACT.

The investment funds are subject to market fluctuations. As the market was high at the end of 2016 there was an increase in a change in fair value of the investment assets reflected in the accounts as at the close of the year.

We continue to look for ways that we can provide financial support to Girl Guide Districts and Regions. We continued the initiative in 2016 of fully funding new Leader qualification training and directly funded the State training of all new Leaders. Regions continue to be allocated additional funds to use to support travel within the Region in particular to enable and support Region personnel attending Region meetings, events and/or trainings. This has had a positive impact on the work in Regions. We continue to work with our insurance brokers to minimise premiums to reduce the financial impact of insurance which is a significant on-going cost for Districts. We have also been fortunate in securing State government grants to be used within Districts and Regions.

Following the property inspections conducted in 2015, our State opened properties benefited from the allocation of some additional funds during 2016. Work at RTS Tingira included some significant work to the pylons and pontoon to the value of \$192,000. Other expenditure included \$81,000 on Glengarry improvements and \$10,000 on Araluen.

During 2016, the Association engaged the services of an external consultant to review our District and Region properties, to ensure they are still maintained at a level required for the Association to carry out its activities. It is possible that maintenance work will be required on some properties as a result of the inspections. However, the amounts that may be payable cannot be determined until the inspections are completed. Accordingly, the Association cannot provide an estimate of the financial

effect, if any, or the timing of any amounts that may become payable. A provision of \$261,260 has been raised as an estimate of the cost of the external consultants to provide the inspections.

The Investment and Building Fund provides a secure option for the holding of surplus District and Region funds. The pooling of funds means we can attract higher interest rates. This provides increased funds which can be drawn as needed by the Districts and Regions. The balance of the Investment and Building Fund as at 31 December 2016 was \$2,732,069. The interest rate to be applied to funds held in the Investment Building Fund in 2016 is 2.86%.

Like all arms of Guiding, volunteers are a necessity to oversee the financial stewardship of the organisation. Heartfelt thanks is extended to Belinda Allen, David Fahey and Lisa Walters for their contribution to the Finance Management Committee.

Additionally, thanks is extended to all who have donated, helped fundraise or contributed in any way to securing the finances of Girl Guides NSW & ACT to ensure the future of Guiding in the Australian community.



Rosemary Derwin | State Treasurer



Our Strategic Plan for 2020

Girl Guides NSW & ACT endorses and supports the National Strategic Framework of Girl Guides Australia (GGA)*. Aligning our association's strategic framework with that of GGA enables us to work towards a common mission and vision, while tailoring our strategic priorities to the needs of our association and its Members in the fulfillment of the goals set for our girls, volunteers and the overall organisation.

Six initiatives inform our key strategic focus areas, underpinning the direction and activities of the organisation for the next five years:

- 1** Membership and Community Engagement
- 2** Organisational Culture
- 3** Brand Recognition
- 4** Streamlined Business
- 5** Financial Sustainability
- 6** Facility Management

These initiatives inform our allocation of resources and effort in each annual business plan. Each initiative has its own set of priority items, indicators of success, and delivery time frame.



* For more information about the GGA Strategic Plan 2020 go to www.girlguides.org.au/About-Us/national-strategic-plan-2020.html
The full Strategic Plan for Girl Guides NSW & ACT is available in print from the office of Girl Guides NSW & ACT or can be read online and downloaded from www.girlguides-nswact.org.au in the *about guides* menu.

The Australian Guide Program

We use a unique, non-formal educational method that sets Guides apart from other youth organisations and unites all Girl Guides and Girls Scouts throughout the world. When applied to any program activity it empowers the girls and young women to take the lead and make choices—ensuring we have relevant, fun and impactful programs. The Australian Guide Program is delivered through a program built on seven fundamentals: Promise & Law, Guiding Traditions, World Guiding, Outdoors, Service & Advocacy, the Patrol System, and Youth Leadership.

The Promise is a personal commitment made when a new Member becomes a Guide. It is about self, personal development, one's own spiritual journey and the development of a personal value system. It is also about what is done for others—the commitment to help others and a responsibility to country. The Guide Law gives guidance and a code to live by as Members strive to put their Promise into action. The Promise and Law underpins everything done as a Guide: no matter what the activity or challenge

Sharing in Guiding Traditions gives a sense of belonging and history. A sense of belonging nurtures a sense of self and identity. Guiding is not just adhering to the traditions that have been in place for over 100 years, it is also about ensuring that traditions are adapted and relevant, inclusive and diverse, and that new traditions are built.

Girl Guides NSW & ACT's International and World Guiding Committee, tasked with upholding the World Guiding fundamental within the AGP, educate and raise awareness of Guiding abroad and awareness of international events, funds, Guiding World Centres and oversee our Associations' participation in Jamboree on the Air (JOTA) and Jamboree on the Internet (JOTI)

The outdoors, including the environment and earth education is possibly the most synonymous of the seven fundamentals with the public perception of the Guiding movement. Many of our state events are underpinned by a focus on the outdoors which also actively embraces and overlaps many of the other fundamentals

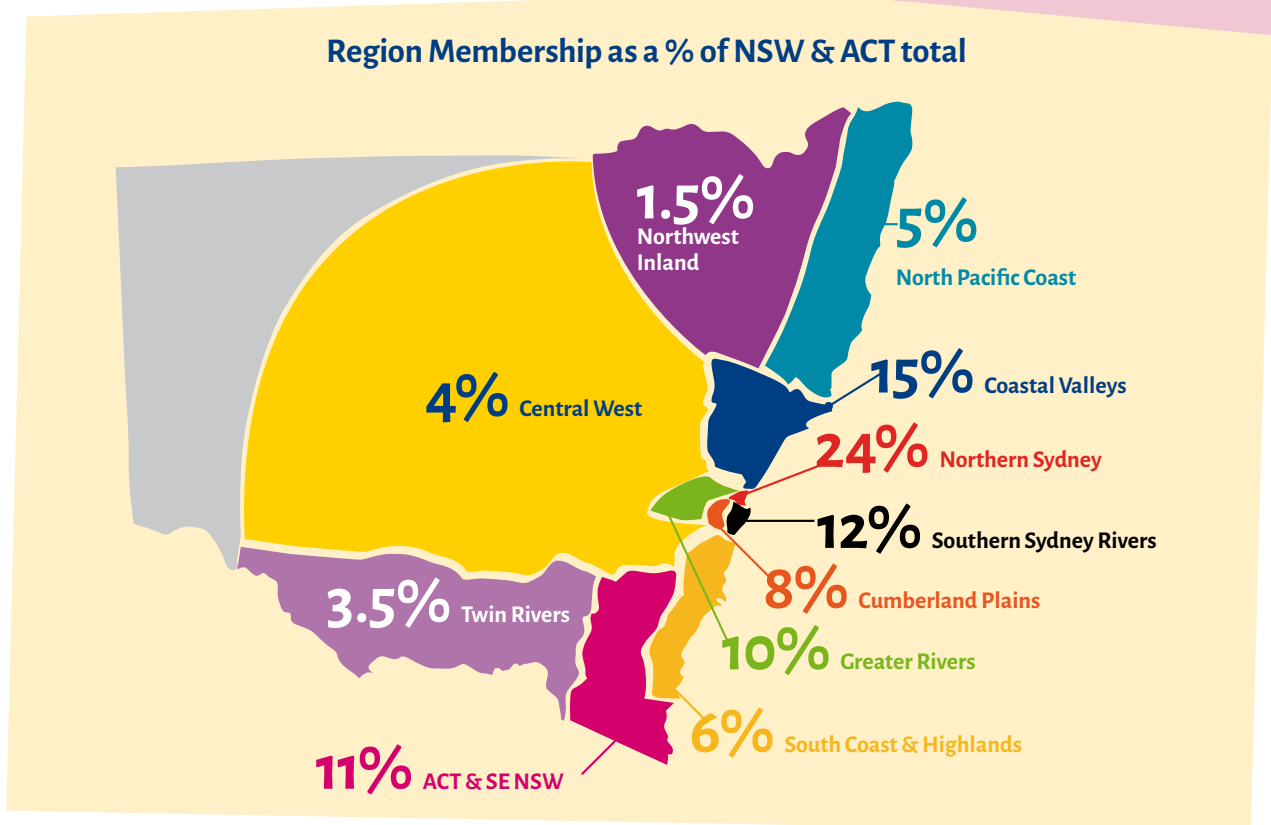
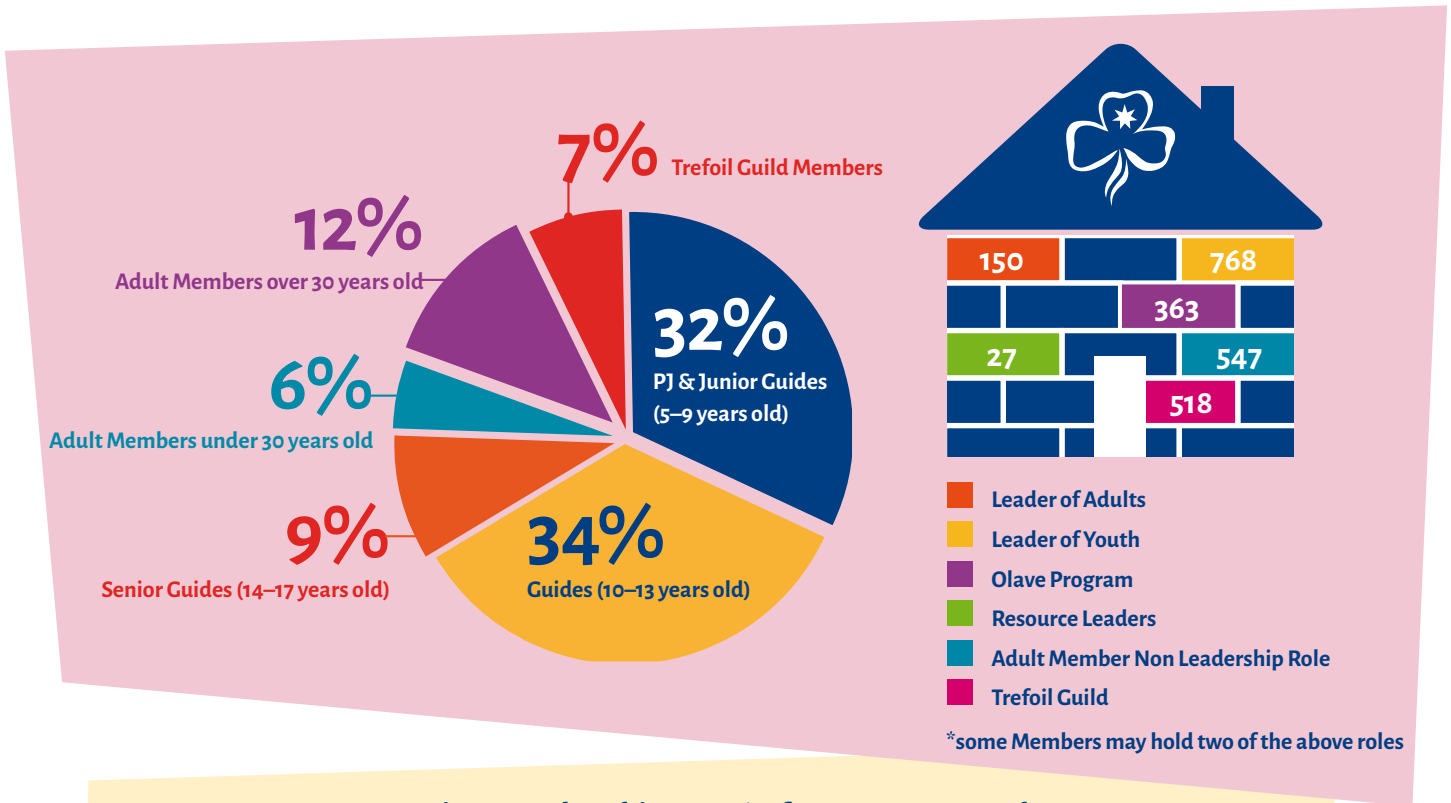
Through service, and advocacy, there are many ways that Guides help others. The AGP equips girls and young women to have a voice and speak up, educate and take action on matters that concern them.

Experiencing leadership development improves skills for life. The AGP encourages local programs to be girl-centred and girl-led, encouraging girls to be independent and confident. We conduct activities and games with fun and friendship at the core that also provide holistic education to our Members.

The Patrol System provides an environment for girls to develop friendships, responsibilities, cooperation and personal growth. All members from the Patrol are active participants, supporting each other and learning off one another in a small peer group, under the leadership of one of their own elected members..

Girl Guides NSW & ACT: a year in numbers

As of 31 December 2016, Girl Guides NSW & ACT was home to 7,301 Members across 531 Units in the 249 Districts that form our 11 Regions. Our membership base can be broken down as follows:

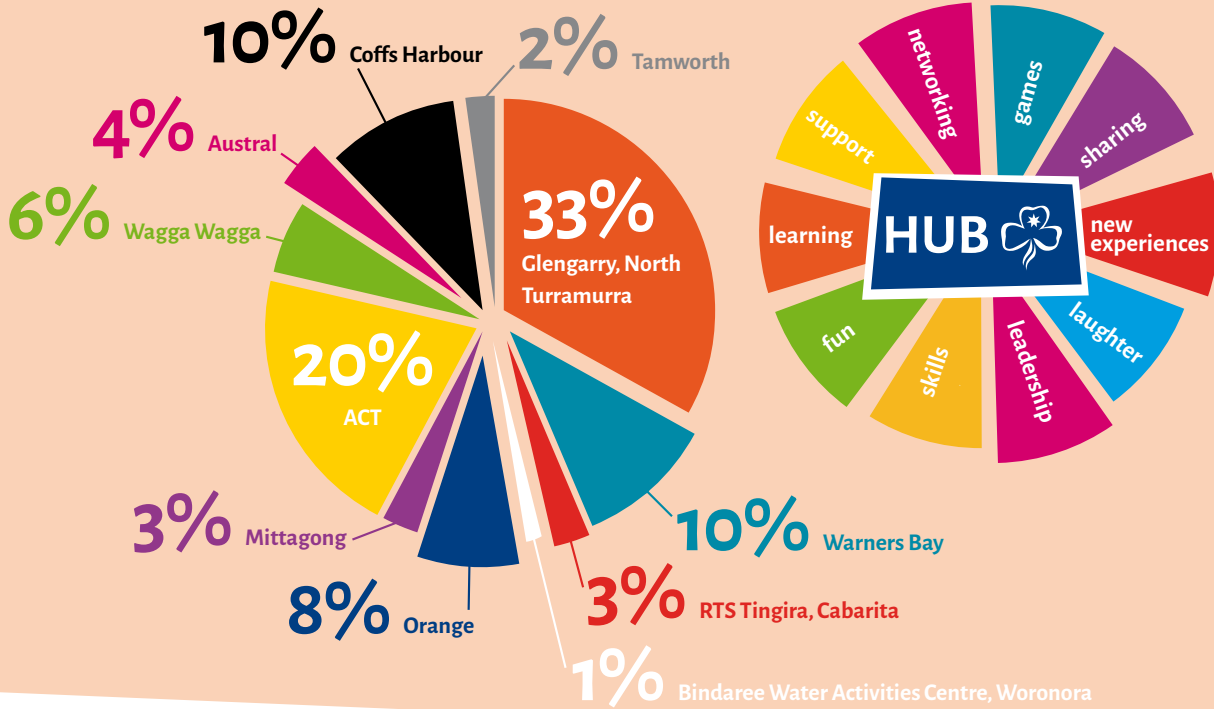




20% of our Adult Members undertaking further development qualified as a Unit Leader, Outdoors Leader or District Manager in 2016, meaning **95%** of our Adult Members now hold Leadership roles, a **32% increase** on 2015. Learning & Development HUBs were introduced to the calendar of training courses, condensing the extra time required for volunteers.

449 trainees were enrolled in enriching courses paving their learning pathway as adult members.

% of Trainees attending courses by geolocation



VOICES AGAINST VIOLENCE



28 adults completed facilitator training for **Voices Against Violence**. This qualifies them to empower

girls to understand and take action against violence against girls in a girl-led and age appropriate manner.

193 Members from **16** Units completed the **Free Being Me** program—a

program designed to empowering girls and young women to transform their lives and their communities by building and strengthening body confidence and boosting self-esteem..

Free Being Me



1125 took part **JOTA/JOTI** in activities. Jamboree on the Air and Jamboree on the Internet is the world's largest gathering of Guides and Scouts held across 48 hours every August.

... a year in numbers continued.

In 2016 a total of 77,601 packets of Guide Biscuits were consumed from NSW & ACT:



13,680 packets of Bush Buddies



863 Members attended **Science in the Garden**, the seventh

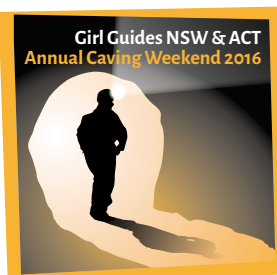
consecutive year of a large scale

Guiding event held at The Australian Botanic Garden, Mount Annan. Participants had the opportunity to partake in 60 STEM related activities—some adventurous, some educational—and see some amazing talks and demonstrations by The Wollongong Science Centre and the renowned geek Dr Karl Kruszelnicki, science communicator and populariser, author, media personality and all round science superstar.



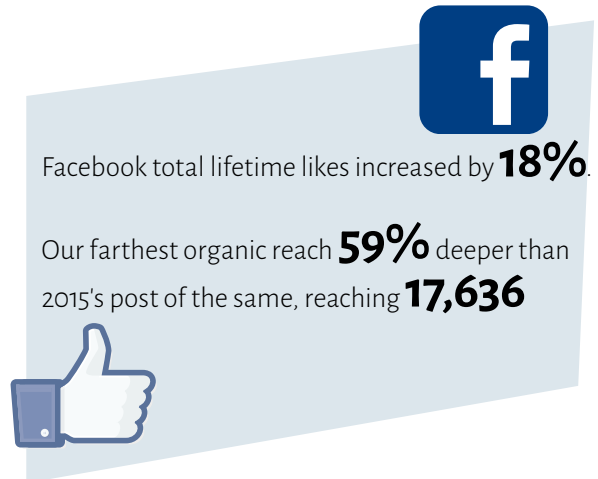
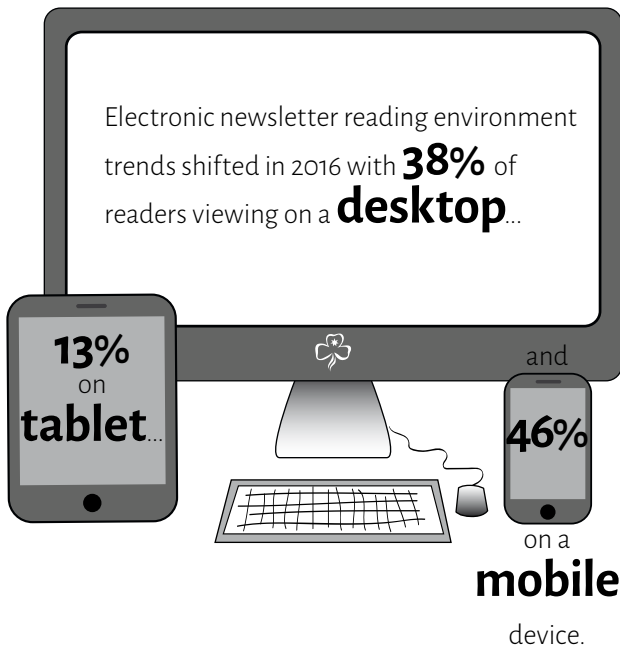
88 Members attended **Vispera**

the second biennial camp for visual and performing arts, open to Guides aged 12–17. Vispera culminated in an exhibition of works created during the camp and a performance.



40 Members attended the annual **Caving Weekend**,

exploring underground ecosystems and experiencing personal development that can only be experienced when challenging oneself in the tight confines of speleological splendiferousness



85 Members attended spring & summer State hosted events at **RTS Tingira** learning water safety and water craft skills



83 Members from **14** **Districts** attended **Rejectamenta**.

In its **22nd year**, this physically demanding, fast-paced and unique Service project provides service to The Smith Family, Fairfax, the City of Sydney and the NSW Government.

834 Members attended **Great Guide Sleepover**

2016: I Am Me. Girl Guides, their Leaders and Unit Helpers descended upon Pyrmont Bay Wharf for our Sleepover pre-activities. Thanks to the Sydney Heritage Fleet, Guides toured the majestic James Craig, a historic 19th century tallship that was restored after a 40 year-long project. Then, it was time to board a fleet of privately-chartered ferries, reserved especially to transport Girl Guides to the heritage-listed Cockatoo Island.



Amidst unrolling of bedrolls and tarpaulins, Guides also took part in various activities at the event's Market Stalls. **\$10 000 was raised for** the 2016 charity, **The Butterfly Foundation**, who run amazing programs for Australians of all ages and genders who suffer from eating disorders and negative body image.

Our Operating Structure

Girl Guides NSW & ACT Board

Provides Governance, plans strategically, sets policy, ensures accountability, approves and monitors significant projects and expenditure, and is comprised of:

**Chairperson
State Commissioner***

Chief Executive Officer*
(By Invitation, Non Voting)

Treasurer*

Deputy State Commissioner/s
(Non Voting)

Up to 9 Elected Members

Up to 3 Co-opted Members

* Ex-Officio Members of all Committees

Volunteers

Member Management Committee
 Chairperson: State Commissioner
 Deputy State Commissioner(s)
 Learning and Development Manager
 Program Manager
 Olave Program Consultant
 Region Manager representative
 CEO or delegate
 As required:
 Chairperson of Finance and/or Risk committees
 Outdoors, Environmental and Earth Education Consultant
 International and World Guiding Consultant

Finance Management Committee

Policy and Procedure Review Committee

Awards Committee


Risk Committee

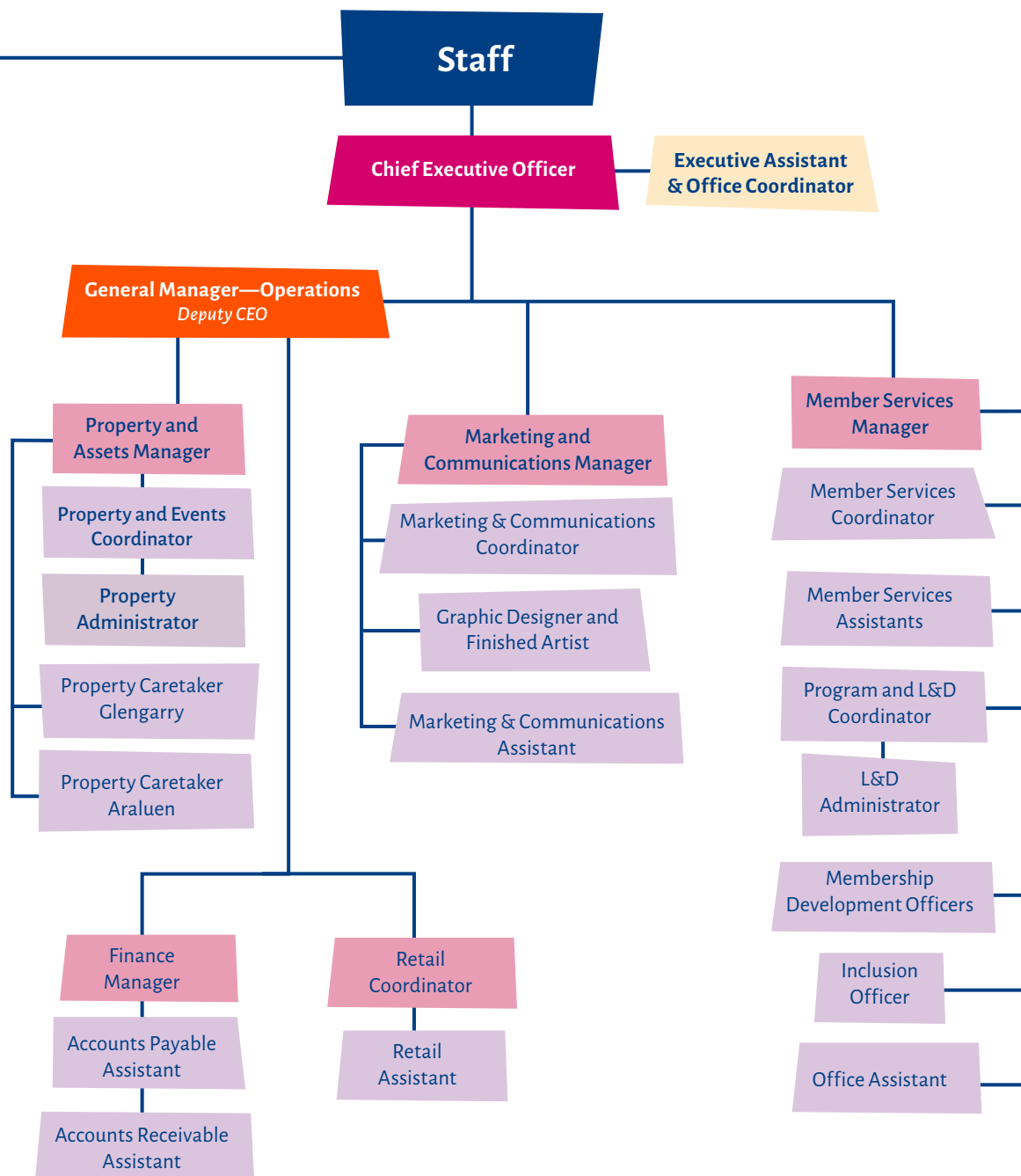
Governance

Region Managers
 11 Appointed Members responsible for the management of each Region

District Managers
 249 Appointed Members responsible for the management of each District

Unit Leaders
 459 dedicated volunteers delivering grass roots Guiding to 5890 girls





Awards and Recognition System

Achievement Awards presented to Youth Members in 2016 included:



23
Gold Endeavour
Awards



14
Queen's Guide
Awards



15
Focus
Awards

The Girl Guides system of awards and recognition is a formal system based on personal challenges, such as:

- discovering something not yet undertaken or that a Guide does not have prior knowledge of, and learning more;
- discovering better ways that a Guide may go about doing something she finds difficult or dislikes;
- persevering at completing or undertaking something that a Guide may find difficult or dislike doing; and
- trying to improve or add to the repertoire of skill a Guide may have.

The above awards are at the highest level that a Guide may achieve, with the Queen's Guide being the peak achievement award, honoured and recognised globally by the World Association of Girl Guides and Girl Scouts.

Adult Awards

Emu

Elizabeth Starr

Wattle

Carol Meiklejohn Tina (Christina) Fisk Katrina Nash Karen Williams

Anne Priestley Chris Glasheen Margaret Wood Renée Bianchi

Bar to Banksia

Joanne Shilling

Banksia

Meredith Wilson Kellie Moore Danielle Green Sally Hodgson

Lynne Bennett Ann Maree Holmes

Boronia

Clare Fuller Tracey Brydon Tonyia Watson Michelle Kothe

Sandra Thomas Christine Butler Pauline McNeilly Terri Zimmerman

Julie-Anne Thompson Mary Falvey Janelle Harding Barbara Scarpellino

Jessica Allison Carolyn Saunders Helen Jarvis

Appointments

Members of the Board

| | | |
|---|---|---|
| Anne Kerle, Chair (<i>resigned May</i>) | Sarah Neill, Chair (<i>appointed May</i>) | Rosemary Derwin, Treasurer |
| (Julie) Anne Knight | Meagen Gardiner | Katrina Nash (<i>resigned May</i>) |
| Hazel Maxwell | Susanna Matters (<i>resigned May</i>) | Bev Orr |
| Davina Rooney, co-opted | Elizabeth Starr (<i>resigned May</i>) | Lindsay Tagg (<i>resigned Feb</i>) |
| Judith Poole (<i>resigned Nov</i>) | Susan Belling (<i>appointed May</i>) | Joanne Muller (<i>appointed May</i>) |
| Kathryn Follers (<i>appointed May</i>) | Lisa Walters (<i>appointed May</i>) | Alice Anderson (<i>appointed May</i>) |

State Appointments

| | |
|--|---|
| State Commissioner | Elizabeth Starr, Acting (<i>until May</i>) Sarah Neill (<i>appointed May</i>) |
| Deputy State Commissioners | Renée Bianchi, Acting (<i>until May</i>) Larissa Saywell (<i>appointed May</i>) Carol Simpson, (<i>July–December</i>) |
| Treasurer | Rosemary Derwin |
| Board Chair | Anne Kerle (<i>until May</i>) Sarah Neill (<i>commenced May</i>) |
| Chief Executive Officer | Peta Gillies (<i>until October</i>) Steffani Jade McDonagh, Interim (<i>appointed November</i>) |
| Membership Development Adviser | Vacant |
| Program Manager | Kate Conroy |
| Assistant Program Manager | Vicki Marsh |
| Learning and Development Manager | Elizabeth Baker |
| Archivist | Chesne Jones |
| Trefoil Guild Adviser | Sally Thornton |
| International and World Guiding Consultant | Amanda Cooper |
| Olave Program Consultant | Kate Jenkin (<i>until April</i>) Sally Woodhouse (<i>appointed July</i>) |

State Appointments, continued

| | |
|--|---|
| Outdoor Environment and Earth Education Consultant | Virginia Brown |
| Inclusion Support Liaison | Emma Introna |
| Advocacy Liaison | Emily Milton Smith |
| Youth Recognition & Awards Liaison | Jodie Chilvers |
| Arts & Culture Liaison | Michelle Thyrd |
| Youth Leadership & Development Liaison | Vacant |
| Risk Management Committee Chair | Davina Rooney |
| Awards Committee Chair | Prue Carpenter |
| Policy & Procedures Review Chair | Judith Hooper (<i>ended March</i>) Lorraine Chegwidan (<i>commenced March</i>) |
| Finance Management Committee Chair | Rosemary Derwin |
| Membership Management Committee Chair | Elizabeth Starr (<i>ended May</i>) Sarah Neill (<i>commenced June</i>) |

Region Managers

| | | | |
|---------------------|--|-------------------------|---|
| Cumberland Plains | Vacant | North West Inland | Vacant |
| Coastal Valleys | Carol Peterson | Northern Sydney | Alice Mee |
| Central West | Vivian Evans | South Coast & Highlands | Sarah Neill (<i>resigned May</i>) Kris Wyber (<i>appointed June</i>) |
| ACT & SE NSW | Fiona Langford | Southern Sydney Rivers | Jenny Hull |
| Twin Rivers | Robin Laverty | Greater Rivers | Kerrey Williams |
| North Pacific Coast | Jenny Cox (<i>resigned May</i>) Elise Crofts (<i>appointed May</i>) | | |

Members in Volunteer Roles with Girl Guides Australia

| | |
|---|--|
| Director—Board of Girl Guides Australia | Rosemary Derwin |
| Honorary Legal Advisor—GGA | Joanne Muller |
| Legal Representative for GGA and State Girl Guide Organisations—Royal Commission into Institutional Responses to Child Sexual Abuse | Joanne Muller |
| Assistant Manager, Learning & Development | Sue Carr |
| Member—Australian Adult Awards Review Committee | Jan Dilworth and Sue Carr |
| Member—Finance and Risk Committee | Rosemary Derwin |
| Member—International Committee | Amanda Cooper |
| Member—L&D Committee | Elizabeth Baker |
| Member—Olave Program Committee | Sally Woodhouse |
| Member—Outdoor Activities Committee | Virgina Brown |
| Member—Program Committee | Kate Conroy |
| Trefoil Guild Advisor | Barbara Fairbairn |
| National Post Secretary | Sandra Herbert |
| Member—Marketing & Communications Committee | Martha Raupp, Kim Ransom, Lindsay Tagg and Kellie Moore. |

Girl Guides NSW & ACT State Properties

Glengarry

Located in the heart of Ku-ring-gai, in Sydney's Northern Suburbs, this State Guiding property is open to dormitory style accommodation and camping year round. Girls take part in low rope activities, archery, hiking and abseiling and the property is also regularly used as a training facility. With a state of the art commercial standard kitchen, Glengarry is also available for weddings and private functions.



Ranger Training Ship (RTS) Tingira

Situated on Sydney's picturesque Hen and Chicken Bay, RTS Tingira is the hub of Girl Guides' water activities – with sailing, canoeing, rafting, rowing, kayaking and other activities led by the Tingira Committee.

RTS Tingira is available for hire by Members. It's the perfect place for the young and the young-at-heart to explore sailing and boating. RTS Tingira has kitchen facilities and is also available to hire for functions. Girl Guides NSW & ACT can organise sailing courses with our qualified instructors for private groups.



Araluen

From a base in Jindabyne, Araluen is perfect for summer activities including mountain biking, horse riding, hiking, skiing and snowboarding in the snow season. Available year round, the lodge sleeps 45 people including a room suitable for disabled access with a fully equipped kitchen, dining area, recreation area, BBQ, TV and DVD player.



Thank you to the Friends of and Property Committee members who volunteer so many hours to ensure these properties are well maintained and provide life experiences for our Members.

Financial Statement

This summary is a true representation of the detailed, audited financial report and should be read in conjunction with the accompanying notes, a copy of which is available upon request.

**GIRL GUIDES ASSOCIATION (NEW SOUTH WALES)
STATEMENT OF PROFIT OR LOSS AND OTHER COMPREHENSIVE INCOME FOR THE YEAR ENDED 31
DECEMBER 2016**

| | Notes | 2016 \$ | 2015 \$ |
|---|-------|------------------|------------------|
| Continuing operations – Revenue and other income | | | |
| Investments | | 2,089,562 | 2,110,207 |
| Marketing & Communications | | 124,591 | 248,470 |
| Membership | | 999,267 | 978,410 |
| Property | | 209,177 | 198,468 |
| Retail | | 356,968 | 388,048 |
| State Guiding | | 7,240 | 6,530 |
| State Operations | | 596,022 | 613,902 |
| Strategic Fund | | 5,700 | - |
| Total revenue and other income from core activities | 2 | 4,388,527 | 4,544,035 |
| Expenditure | | | |
| Investments | | 455,856 | 351,100 |
| Jamboree | | 1,918 | - |
| Marketing & Communications | | 165,188 | 231,688 |
| Membership | | 121,395 | 77,041 |
| Property | | 652,769 | 433,664 |
| Retail | | 413,702 | 405,773 |
| State Guiding | | 188,106 | 152,147 |
| State Operations | | 2,647,486 | 2,550,897 |
| Strategic Fund | | 380,609 | - |
| Total expenditure from core activities | | 5,027,029 | 4,202,310 |
| Surplus/(deficit) from core activities | 14 | (638,502) | 341,725 |
| Income from reserve fund transactions | 2 | - | 31,411 |
| Expenses from reserve fund transactions | | 10,373 | 8,774 |
| Surplus/(deficit) from reserve transactions | 14 | (10,373) | 22,637 |
| Bequests | 2 | 12,750 | 288,986 |
| Surplus from non-core activities | 14 | 12,750 | 288,986 |
| Operating surplus/(deficit) from continuing operations | | (636,125) | 653,348 |
| Other comprehensive income (loss) | | | |
| <i>Items that may be reclassified to profit or loss</i> | | | |
| Changes in fair value of available-for-sale financial assets | 13 | 418,888 | (981,021) |
| Total comprehensive loss for the year | | (217,237) | (327,673) |

GIRL GUIDES ASSOCIATION (NEW SOUTH WALES)
STATEMENT OF FINANCIAL POSITION AS AT 31 DECEMBER 2016

| | Notes | 2016 \$ | 2015 \$ |
|---|-------|-------------------|-------------------|
| ASSETS | | | |
| Cash and cash equivalents | 4 | 179,099 | 651,234 |
| Trade and other receivables | 5 | 440,610 | 564,012 |
| Inventories | 6 | 258,580 | 232,118 |
| Other | | 171,651 | 119,303 |
| TOTAL CURRENT ASSETS | | 1,049,940 | 1,566,667 |
| Available-for-sale financial assets | 7 | 24,407,666 | 23,944,592 |
| Property, plant and equipment | 8 | 4,631,293 | 4,625,967 |
| Intangible assets | 9 | 14,372 | 21,823 |
| TOTAL NON-CURRENT ASSETS | | 29,053,331 | 28,592,382 |
| TOTAL ASSETS | | 30,103,271 | 30,159,049 |
| LIABILITIES | | | |
| Trade and other payables | 10 | 517,057 | 600,293 |
| Provisions | 11 | 261,360 | - |
| Employee benefits | 12 | 51,092 | 70,479 |
| TOTAL CURRENT LIABILITIES | | 829,509 | 670,772 |
| Employee Benefits | 12 | 40,894 | 38,172 |
| TOTAL NON-CURRENT LIABILITIES | | 40,894 | 38,172 |
| TOTAL LIABILITIES | | 870,403 | 708,944 |
| NET ASSETS | | 29,232,868 | 29,450,105 |
| ACCUMULATED FUNDS AND RESERVES | | | |
| Reserve funds | 13 | 4,062,176 | 4,072,549 |
| Market value reserve | 13 | 3,242,981 | 2,824,093 |
| Accumulated funds | 14 | 21,927,711 | 22,553,463 |
| TOTAL ACCUMULATED FUNDS AND RESERVES | | 29,232,868 | 29,450,105 |

The above summary is a true representation of the detailed, audited financial report and should be read in conjunction with the accompanying notes, a copy of which is available upon request.



GIRL GUIDES AUSTRALIA NATIONAL OFFICE

Suite 103, Level 1, 100 William Street,
Woolloomooloo NSW 2011
T: (02) 9311 8000
E: guides@girlguides.org.au
www.girlguides.org.au

GIRL GUIDES NSW & ACT

Level 2, 55 Holt Street, Surry Hills NSW 2010
T: (02) 8396 5200
E: guides@girlguides-nswact.org.au
www.girlguides-nswact.org.au

GIRL GUIDES NORTHERN TERRITORY

55 Ross Smith Avenue, Parap NT 0820
T: (08) 8981 3628
E: girlguidesnt@iinet.net.au
www.girlguidesnt.com

GIRL GUIDES QUEENSLAND

Unit 1, 132 Lutwyche Road, Windsor 4030
Postal address: PO Box 739,
Fortitude Valley QLD 4006
T: (07) 3357 1266
E: reception@guidesqld.org
www.guidesqld.org

GIRL GUIDES SOUTH AUSTRALIA

63 Beulah Road, Norwood SA 5067
T: (08) 8418 0900
E: guides@girlguidessa.org.au
www.girlguidessa.org.au

GIRL GUIDES TASMANIA

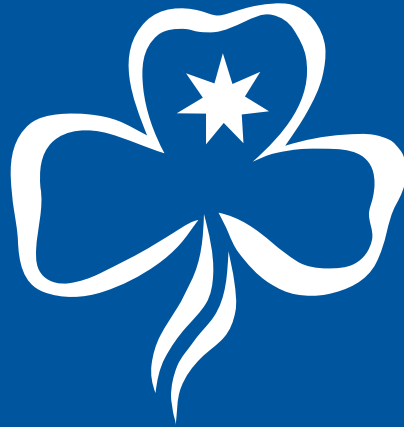
17 Clarence Street, Bellerive TAS 7018
T: (03) 6244 4408
E: office@guidestas.org.au
www.guidestas.org.au

GIRL GUIDES VICTORIA

Suite 812, 401 Docklands Drive, Docklands 3008
T: (03) 8606 3500
E: guides@guidesvic.org.au
www.guidesvic.org.au

GIRL GUIDES WESTERN AUSTRALIA

265 Great Eastern Highway Belmont WA 6104
Postal address: PO Box 780, Victoria Park WA 6979
T: (08) 9479 9800
E: info@girlguideswa.org.au
www.girlguideswa.org.au



GIRL GUIDES
A U S T R A L I A
N S W & A C T

Our mission is to empower girls
and young women to grow
into confident, self-respecting,
responsible community members

www.girlguides-nswact.org.au

